

Codehost Inc. BrightQ for UNIX & Linux



UNIX & LINUX PRINTING MADE SIMPLE

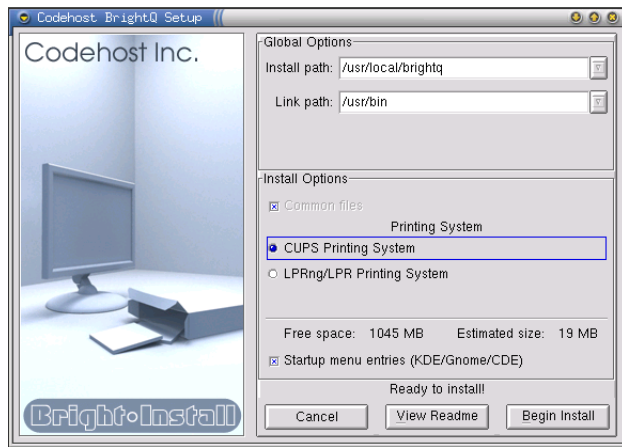
Codehost's BrightQ™ was developed exclusively for the UNIX and Linux operating systems. BrightQ™ supplies system administrators, IT support personnel, printer OEM support personnel, and anybody who prints via UNIX and Linux, with an easy-to-use, graphically rich, printing environment. This dynamic printing suite is customizable for nearly any line of monochrome, color, desktop, impact, thermal, production, or back-

office printer. Not only does BrightQ™ provide a sophisticated, graphical printing environment, but it also installs an easy to configure and support service protocol suite. This turnkey package allows users to take advantage of the full functionality of all their printers and multi-function devices while still capitalizing on the strength of their UNIX and Linux applications.

BrightInstall

The package comes with an easy-to-use graphical installation and configuration wizard. The following features were designed to ease the otherwise difficult process of installing and configuring printers on UNIX and Linux systems:

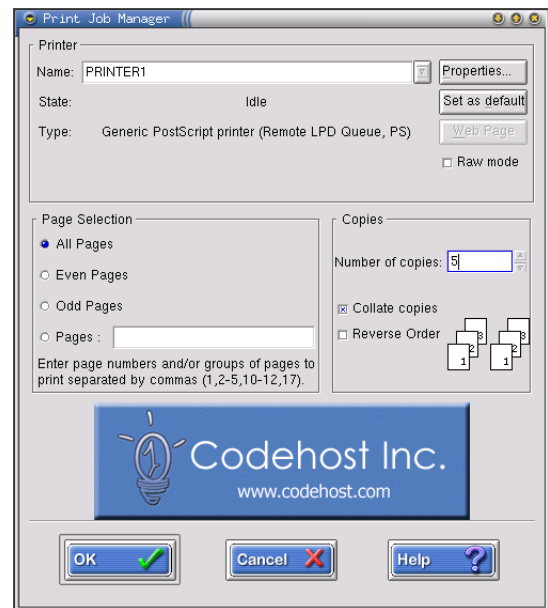
- Automatic detection of architecture, pre-existing printing installations, kernel & distribution*
- Automatic detection of the printing system settings
- Several installation types: full, recommended, and customized for advanced users
- Uninstall allows you to revert back to pre-existing setup



Print Job Manager

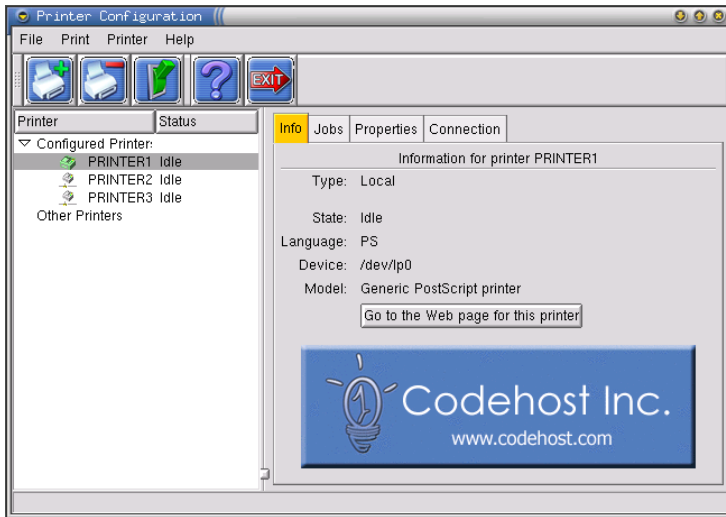
Designed as a substitute for command-line printing tools, the print job manager allows the user to fully access all the features and functionality of the target printer made available through the OEMs PPD**:

- Page selection & resizing
- Simplex/Duplex printing
- Collation/Print output order
- Number of pages per sheet
- Paper source & orientation



BrightQ™ comes complete with **BrightInstall™** (Codehost's turnkey installation tool for UNIX and Linux), a **Print Job Manager, Configuration Tool**, and **support for all common UNIX and Linux printing systems.**

Configuration Tool



Basic features include:

- Add/Remove Printers
- Inspect and manage job queues
- Drag-and-Drop jobs from one printer queue to the other
- Pop-up Tool Tips/Help menus
- Adjust system-wide settings for multiple users on multiple printers
- Set user and system default configurations
- Define the service protocols desired for printing i.e. LPD/R, SMB, IPP, etc.
- Software updates from FTP and HTTP sites when available
- Print test page/PostScript documents

Additional Key Features

- Ability to administer and use many printers
- Customizable to support printer-specific features or a clients unique needs
- Scalable for use with many types of printers
- Scalable for use with many types of PDL's
- Turnkey network and driver installation
- Auto printcap configuration
- Ability to reconfigure and rename output devices
- Support for MFD/P extended options, ie. Print to Mailbox, Faxing, Stapling, Sorting, Simplex/Duplex, HSL/B color adjustments, Electronic Collation, Booklet Printing, etc.
- Full support for command line UNIX and Linux printing via LP/LPR/CUPS

Service Protocols Supported

- SMB
- IPP
- LPR/LPD
- Socket/RawTCP

Local Connections

- USB
- Parallel Port
- Serial Port

UNIX Operating System Support

- Solaris(SunOS) 8 (5.8)UltraSPARC
- Solaris(SunOS) 8 (5.8) x86
- AIX 5.1 Power PC
- HP-UX 11i PA-RISC
- IRIX 6.5 MIPS
- SCO Open UNIX 8/Open Server 5.0.6
- FreeBSD 4.6 x86-Intel and Intel-Compatible

Linux Distribution Support

- Red Hat 6.2
- Mandrake 8.0
- SuSE 7.3
- Debian 2.2
- Slackware 7.1
- Caldera 7.0
- TurboLinux 7.0

* Distribution detection is a Linux-only functionality

** Codehost Inc. reserves the right to modify and or exclude any or all features in BrightQ™ without notice. Codehost, Inc. reserves the right to exclude any and or all versions of either Linux distributions and or UNIX Operating Systems without notice.

Codehost and BrightQ are Trademarks of Codehost, Inc.
Copyright 2002 Codehost, Inc.

